



**CUT TO SIZE
plastics**

NSW: Cnr. Dursley & Fairfield Rds.
Yennora NSW 2161 Australia

QLD: Unit 1 & 2, 33 Stockwell Place.
Archerfield QLD 4108 Australia

Mail: PO Box 910 Fairfield NSW 1860

ABN: 73 001 909 673

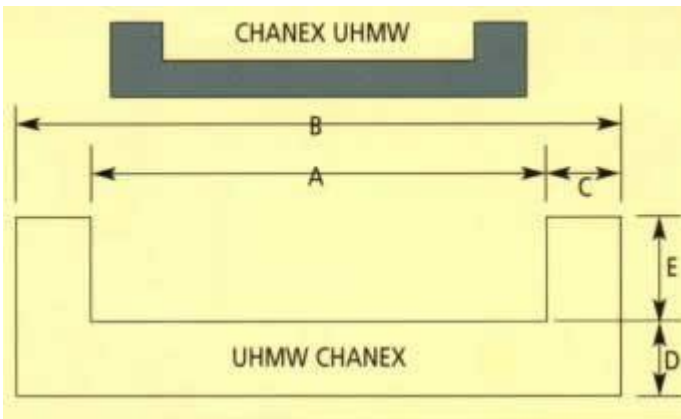
p: +61 2 9681 0400
f: +61 2 9681 0450
e: sales@cutoffsize.com.au

p: +61 7 3276 6700
f: +61 7 3276 6799
e: qld@cutoffsize.com.au

www.cutoffsize.com.au

TECHNICAL INFORMATION CHANEX® TIMBER PRODUCTS

Cut To Size Plastics Pty Ltd introduces Chanex® a UHMWFE channel currently being used in countless industrial applications all over the world. The inherent properties of outstanding wear resistance, low friction, high impact Strength, and Strong resistance to corrosive media have led to the development of CHANEX® UHMWFE Channel. This lightweight channel requires little maintenance and no lubrication. It reduces wear and noise and is available in various dimensions. It is also compatible with various sub-structures.



- Chanex® is extruded using only virgin UHMWFE. The Standard method of fastening is a plug welded countersunk washer. Please refer to Suggested fastening methods fact Sheet.
- Chanex® is available pre-drilled to customers specifications for the plug welded countersunk washers.
- For profiles and sizes not shown, please contact our Sales department.

Chanex®	Chaintrack Sizes	A	B	C	D	E	Lb/Ft
2"		1 1/2"	2"	1/4"	3/8"	1/2"	0.46
3" Std.	81-X	2 1/4"	3"	1/2"	1/2"	3/4"	1.0
4" Std.	H78(H78A) (H78B)	3 1/4"	4"	1/2"	1/2"	3/4"	1

Standard stock lengths are 20'. Other sizes available upon request.



**CUT TO SIZE
plastics**

NSW: Cnr. Dursley & Fairfield Rds.
Yennora NSW 2161 Australia

QLD: Unit 1 & 2, 33 Stockwell Place.
Archerfield QLD 4108 Australia

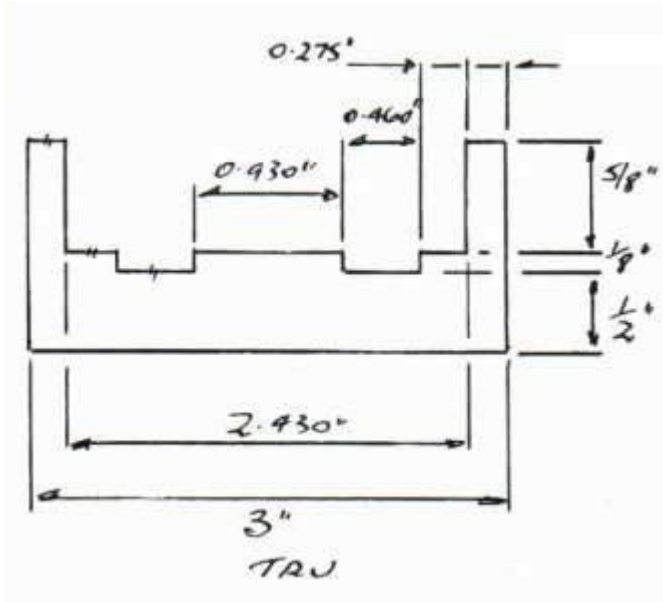
Mail: PO Box 910 Fairfield NSW 1860

ABN: 73 001 909 673

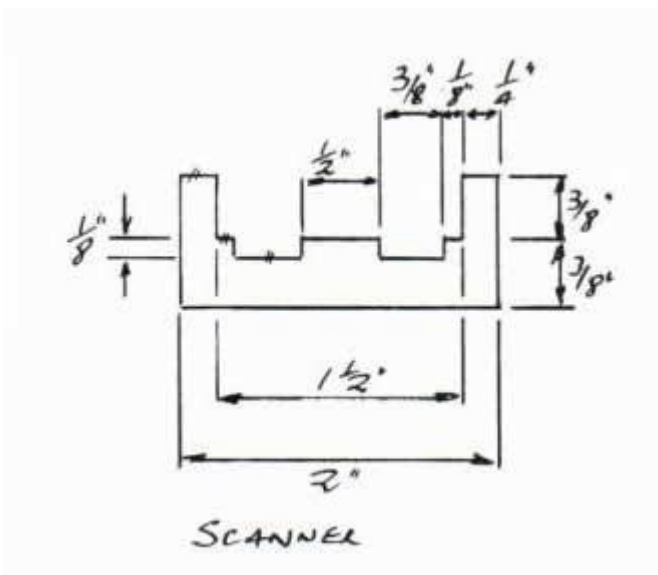
p: +61 2 9681 0400
f: +61 2 9681 0450
e: sales@cutoffsize.com.au

p: +61 7 3276 6700
f: +61 7 3276 6799
e: qld@cutoffsize.com.au

www.cutoffsize.com.au



- Chanex True Trak Specially designed profile to balance load evenly across the chain width. 3 inch wide to Suit 81X chain.
- Chanex Scanner Trak Scanner Trak is moulded to keep the chain running in a True line enabling the Timber to be electronically Scanned giving a clearer read out. 2 inch to suit 2060 chain.





**CUT TO SIZE
plastics**

NSW: Cnr. Dursley & Fairfield Rds.
Yennora NSW 2161 Australia

QLD: Unit 1 & 2, 33 Stockwell Place.
Archerfield QLD 4108 Australia

Mail: PO Box 910 Fairfield NSW 1860

ABN: 73 001 909 673

p: +61 2 9681 0400
f: +61 2 9681 0450
e: sales@cutoffsize.com.au

p: +61 7 3276 6700
f: +61 7 3276 6799
e: qld@cutoffsize.com.au

www.cutoffsize.com.au

Application

Chanex® chain track	Polyurethane J-Hooks	Wearorb impact pad
Custom profiles	Polyurethane & UHMWPE idler and drive sprockets	Sawblade guide material
Weld washers	Chain caps	UHMWPE wear strip
UHMWPE roller lugs	Sprockets	Polycarbonate guards
UHMWPE Chain caps	Scotchply™ reinforced springs for vibratory conveyers	Custom machined parts
UHMWPE Chain caps		

Disclaimer:

We cannot anticipate all conditions under which this information and our products, or the products of other manufacturers in combination with our products, may be used. We accept no responsibility for results obtained by the application of this information or the safety and suitability of our products, either alone or in combination with other products. Users are advised to make their own tests to determine the safety and suitability of each such product or product combination for their own purposes. Unless otherwise agreed in writing, Cut To Size Plastics sell the products without warranty and buyers and users assume all responsibility and liability for loss or damage arising from the handling and use of our products, either used alone or in combination with other products.

For the most recent technical data and free application advice, please call Cut To Size Plastics on: (02) 9681 0400.