



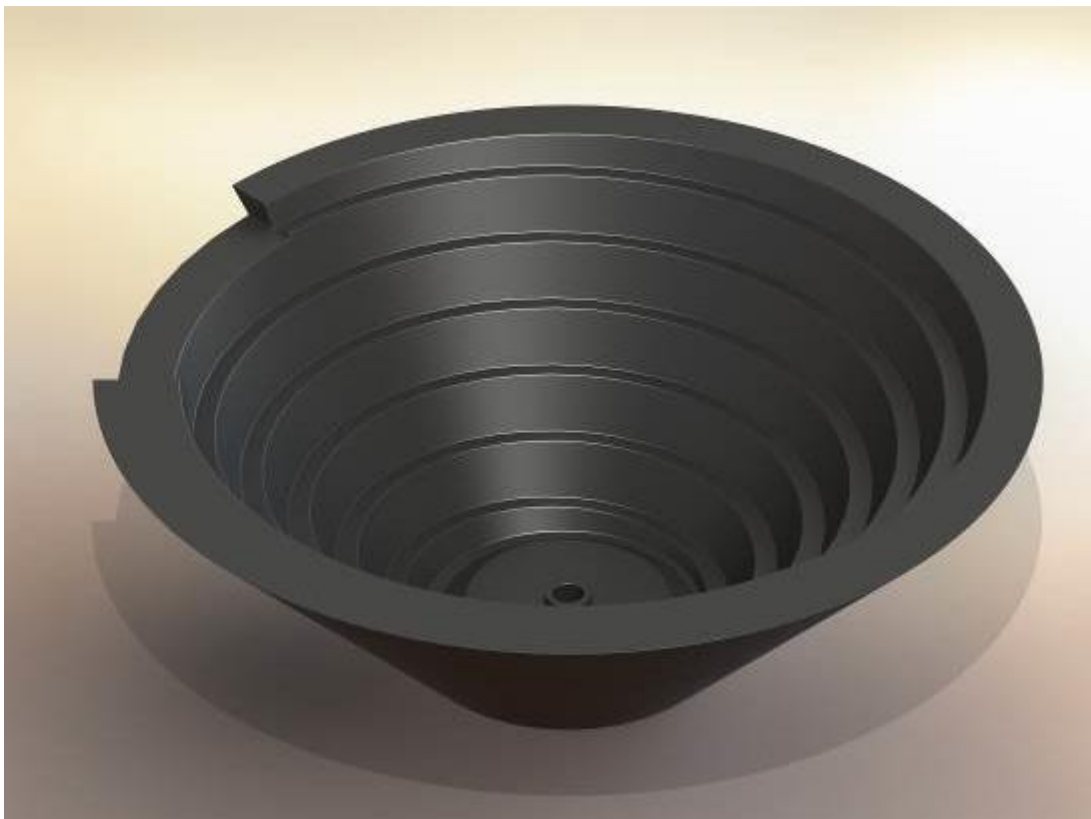
NSW: Cnr. Dursley & Fairfield Roads  
Yennora NSW 2161  
PH: 02 9681 0400 Fax: 02 9681 0450  
sales@cuttosize.com.au

QLD: Unit 1 & 2, 33 Stockwell Place  
Archerfield QLD 4108  
PH: 07 3276 6700 Fax: 07 3276 6799  
qld@cuttosize.com.au



Media Release – CUT TO SIZE PLASTICS – April 2016

# Clean green Wearlon vibratory bowls cut noise, wear and contamination in production automation



Quieter, more wear resistant and cleaner vibratory bowl feeders for production automation processes are custom-engineered to the needs of individual industries by Cut To Size Plastics using its Wearlon family of hard-wearing cast polyamides as an alternative to metals.

The Wearlon family – incorporating the globally proven LiNNOTAM range of cast polyamides from international manufacturer and fabricator of engineering plastics Licharz - is suitable for OEM use and clean and green metal replacement in applications involving hygienic and durable transmission of mechanical force, movement of industrial components and minimising friction in production and sorting processes.

The family is outstandingly suitable for vibratory bowl feeders which are the most common device used to feed components in industrial assembly automation applications including pharmaceutical, automotive, electronic, food, Fast Moving Consumable Goods (FMCG), packaging and metal working industries. It also serves other industries such as glass, foundry, steel, construction, production of fasteners, recycling and sorting, pulp and paper, and plastics

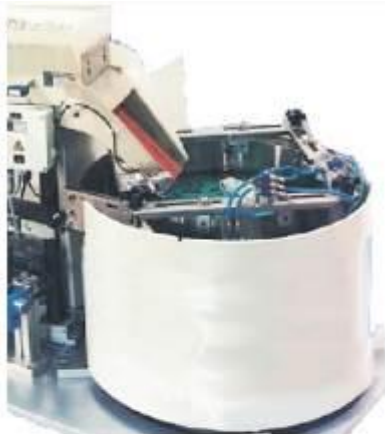
Vibratory feeders are self-contained systems, comprising of a specially tooled bowl feeder that orients the components, a vibrating drive unit upon which the bowl feeder is mounted and a variable-amplitude control box.

The parts fed through the grooves of vibratory bowls are carefully and cleanly handled in bowls engineered from Wearlon, says Mr Pat Flood, NSW Manager of Cut To Size Plastics, which manufactures components for applications across Australasia from its Head office in Sydney where facilities include CNC machining facilities coupled with GibbsCAM™ and Solidworks™ software.

“Because of the high wear-resistance of Wearlon materials, there is no abrasion wear to dirty the parts. This eliminates the need for an additional layer of wear protection in the vibratory bowl. Painting or coating for corrosion protection is not necessary, because this advantage is built in.

“Also, cast polyamide has good dampening properties, so the noise level generated by the vibratory bowl can be reduced as an OH&S measure and to reduce distractions to production staff.”

Wearlon advantages also include:



- High machinability
- Low weight
- Economical production
- Availability in almost unlimited sizes

The cast polyamides of the LiNNOTAM members of the Wearlon family can be produced as semi-finished products or near net shape components and are virtually free of internal stress, extending service life. Cut To Size offers a large selection of shapes, weights and dimensions as well as guidance on the best polyamide for particular processes, based on decades of experience in product specification.

